

🏠 Broadway, Stratford
PO Box 98, Stratford4352

✉ info@kingstheatre.co.nz

☎ 06 765 8255



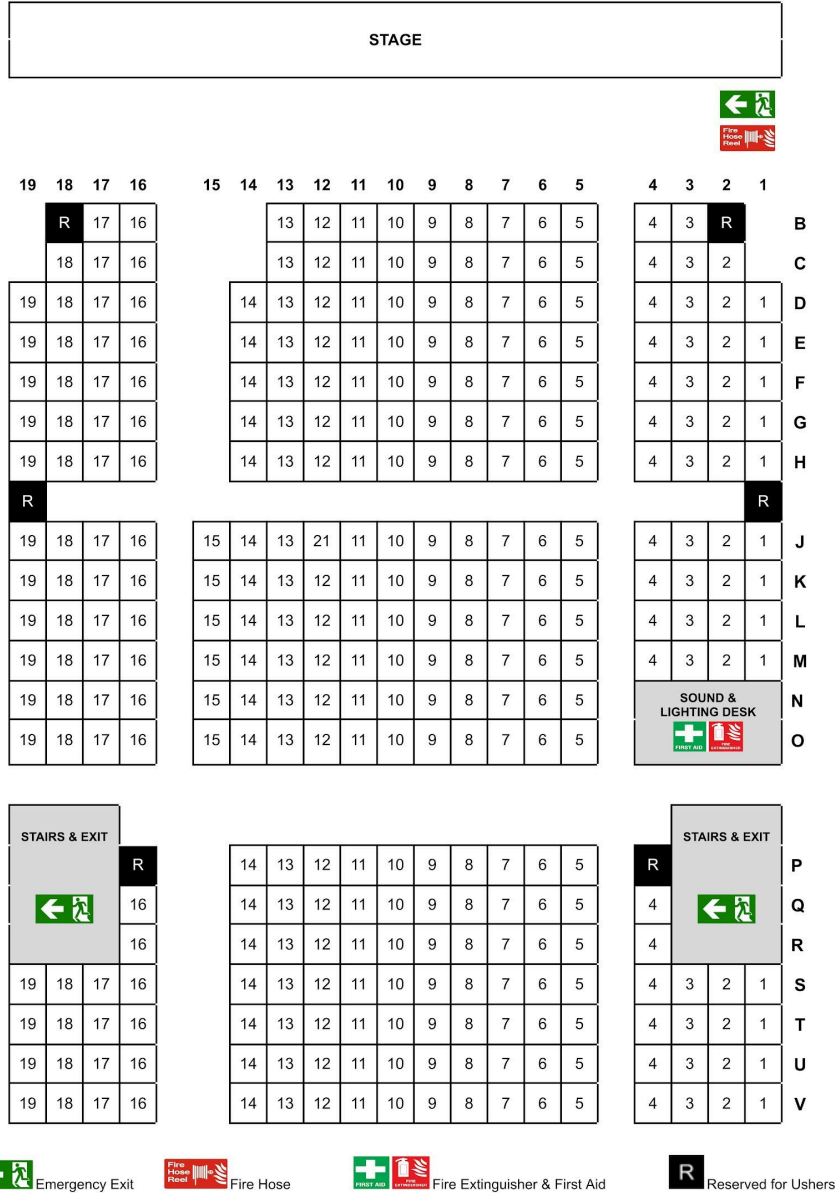
TET King's Theatre Technical Specs



Seating Plan

SEATING PLAN - TET KINGS THEATRE

Total Number of Seat for hirer = 330



Control Position is located in the Auditorium middle section house right. Comfortably seating x2 people. Power, Sound and Lighting control is located here.

Lighting

Fixtures

Selecon PC 1200 x 6
Selecon Fresnel 1200 x4
Selecon PC650 x 6
Selecon Fresnel 650 x 2
Selcon RGB Cyc Lights x 2
Chauvet DJ SlimPAR Pro Q x4

Other

Swisson XSP DMX Opto Splitters
Cyc
Projector (HDMI, input at control position)

Desk

ETC ColorSource - 20 Faders

Dimmers

Theatrelight DMX 12 channel
dimmer pack x 2



More info;

<https://www.etconnect.com/Products/Consoles/ColorSource/Features.aspx>

Sound

Desk

Yamaha TF5

Patching

The First 16 channels of the TF mixer are linked to the 16 inputs on the TIO.

Channels 17–32 are available on the rear of the console (inputs 17-32).



Looking at the stage, the foldback speakers are as

1. LEFT – AUX1
2. RIGHT – AUX2

To the right of the console are the aux send buttons.

Press the desired aux and the console faders will flip to show you what is being sent currently, you can then adjust from there. In this mode the red master fader becomes the master for that AUX Send.

To get back to the FoH mix page, press the flashing AUX button again. At the very bottom of these buttons are the FX sends. These send work the same as a an AUX send however instead of sending to a fold back speaker it is sent to the internal FX units. These can then be brought into the FoH mix by dialling up the rotary knob to the right of the screen. There are two labelled FX1 and FX2.

There are fantastic training Videos to help you with the Yamaha TF console available at <https://usa.yamaha.com/products/proaudio/mixers/tf/training.html>

Equipment

28 Channel Snake from side of stage to amp rack

Shure SM58 x3

Mic Stand x3

Sennheiser EW 100 G4-835-S Wireless Handheld Microphone x2

Power

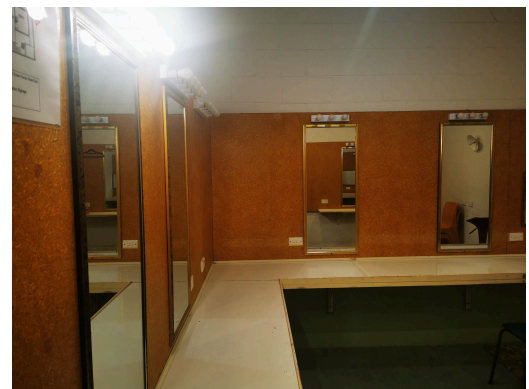
Pre-wired lighting bar x 1

3 Phase outlets x 4

Loading Dock



Green Room



X3 large dressing rooms, one small single room. X2 toilets, coat racks and hangers available. Tea/coffee facilities available in the kitchen. Audio and Video live stream of stage in main area.